



Prisma Health Use AiRISTA Flow RTLS and Cisco MSE v7.5 to Improve Operational Efficiency

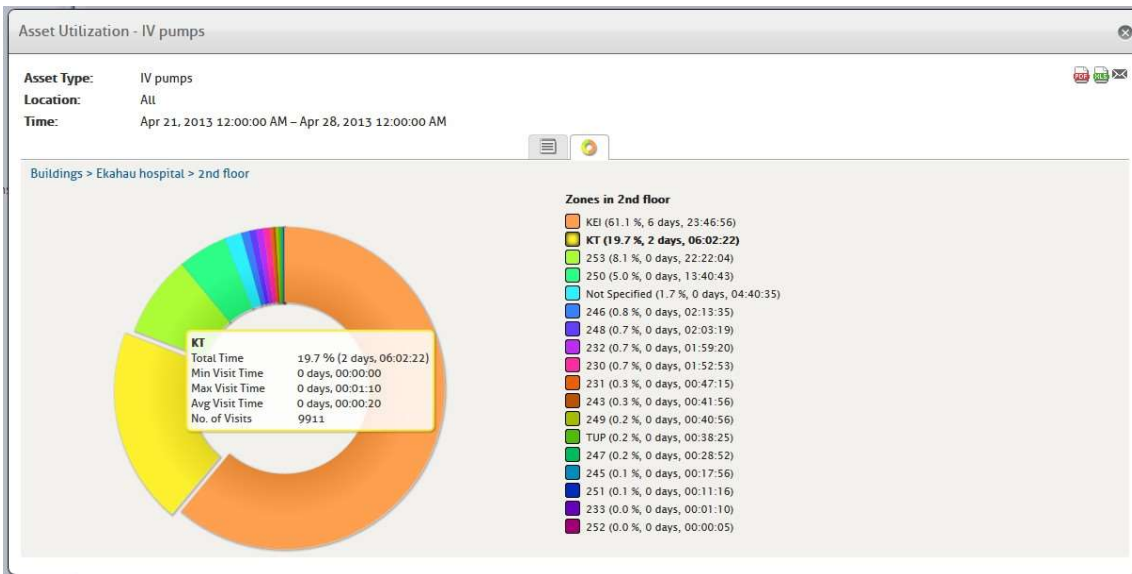
Challenge

Prisma Health in Columbia, South Carolina, is the leading provider of health services in the region offering inpatient and outpatient services including general, acute and critical care. The 1,138-bed health system has more than 8,400 employees and 1,000 physicians and serves as a vital fixture of the community.

Prisma Health is recognized for its dedication to adopting advanced IT initiatives that improve the safety and quality of care. Prisma Health wanted to give hospital managers visibility into equipment locations in order to improve coordination, communications and collaboration between caregivers and other staff members. Real-time location technology could also reveal day-to-day work flows and provide intelligence that could be shared across facilities, revealing equipment utilization rates and ultimately improving equipment availability, and reducing patient wait times.



AiRISTA Flow's RTLS asset tracking tags have two configurable buttons for sending alarms to convey conditional changes, such as when an asset needs to be serviced.



AiRISTA Flow Vision™ also automatically measures equipment par levels and asset utilization rates, providing unique business intelligence that can improve long-term equipment placement strategies, purchasing plans and overall availability.

Solution

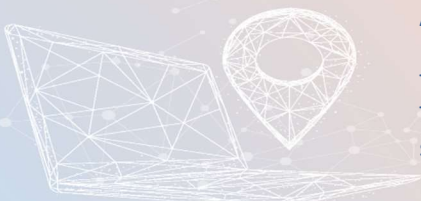
Prisma Health implemented AiRISTA Flow's wire-free Real-Time Location System (RFID-over-Wi-Fi™) using their existing Cisco WLAN and Cisco's Mobility Services Engine (MSE v7.5) to enable asset tracking at two facilities. AiRISTA Flow Vision™ RTLS hosted software along with AiRISTA Flow RTLS tags help caregivers instantly locate 1000 infusion pumps and other vital medical equipment on web-accessible facility maps.

AiRISTA Flow's RTLS software not only provides an asset's location, it indicates its status and condition (e.g. in use/ available, dirty/clean) thus making equipment more accessible to caregivers. AiRISTA Flow's RTLS asset tracking tags also have two configurable buttons for sending alarms to convey conditional changes, such as when an asset needs to be serviced. AiRISTA Flow RTLS tags can also be configured and managed remotely, anywhere in the hospital, without having to recall tags or equipment.

AiRISTA Flow Vision RTLS software also minimizes shrinkage at Prisma Health by 'geo-fencing', i.e. alerting staff if equipment enters user-defined "restricted" zones such as exit areas.

AiRISTA Flow Vision™ also automatically measures equipment par levels and asset utilization rates, providing unique business intelligence that can improve long-term equipment placement strategies, purchasing plans and overall availability. AiRISTA Flow RTLS is integrated with Cisco's Mobility Services (MSE v7.5) which centralizes location data across the Prisma Health campuses and improves the ease of data sharing on site, lending scale to the RTLS deployment. Leveraging the Cisco and AiRISTA Flow RTLS deployment, Palmetto's management team also receives regular AiRISTA Flow reports on equipment utilization rates, par levels, turnaround times and can therefore optimize inventory to meet each facility's unique demands, driving operational efficiency at Prisma Health.

With AiRISTA Flow RTLS, Prisma's caregivers can spend less time searching for equipment and more time caring for patients.



AiRISTA Flow, Americas
 1966 Greenspring Dr. | Suite 125
 Timonium, MD | 21093 | USA
 Tel: 1-844-816-7127
salesinfo@airista.com

AiRISTA Flow, APAC
 Level 9 Wyndham Building
 1 Corporate Court
 Gold Coast | QLD | Australia
 Tel: +61- 07- 2104- 1852
salesinfo@airista.com

AiRISTA Flow, EMEA
 Espoo | Finland | 02130
salesinfo@airista.com

