



Wander Management & Alerting System

Real Time Insight Into The Movement and Elopement of Patients

AiRISTA's Wander Management Solution provides a comprehensive approach to protecting patients when constant supervision is not possible.

Challenge

Patient safety is a primary goal across Assisted Living, Memory Care, and Behavioral Health facilities. Providers are resource constrained so need a comprehensive wander management solution. Current solutions are complex and expensive and often fail to provide the two-way communication required for a timely and coordinated response.

Solution

Key components of a comprehensive solution:

- ✓ Easy to deploy
- ✓ Provide two-way communication
- ✓ Customizable response rules
- ✓ Geofence zones
- ✓ Unobtrusive tags
- ✓ Simple to maintain

A variety of patient specific tags relay location over your existing Wi-Fi infrastructure. Patient location is continuously analyzed against zones, patient type and time of day. Custom workflows ensure alerts are delivered to security personnel, management, and even coworkers in the vicinity with the name & location of the wandering patient. Event recordings help you stay compliant with federal and state requirements and can be used to drive continuous improvement.

Responding to Alerts

Responders receive real-time alerts with the location and ID of patients that have wandered. An alert is escalated if it persists beyond a designated period. Recorded playback develops best practices and continuous improvement. Facility systems can be integrated to lock doors, turn on lights, play recorded messages or update displays based on the patient's identity.

Optional buttons on patient tags can be used to summon help. Integration with nurse call systems ensures that the right resource responds.



PATIENT & STAFF SAFETY SOLUTIONS

HEALTHCARE

How it Works

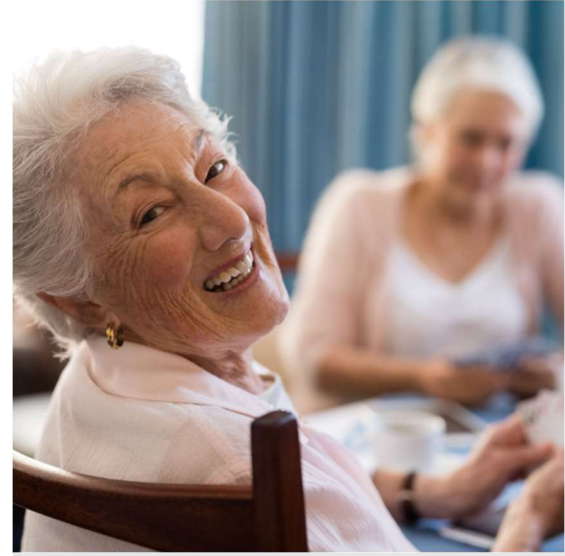
Beautiful in its simplicity, the solution tracks tags for patients and staff using existing wireless infrastructure or AiRISTA devices to augment coverage. When an event is detected, the tag's ID is relayed over the wireless infrastructure to the AiRISTA software platform which calculates location based on patented algorithms. Response rules configured on the software platform direct the best responders to the event location. AiRISTA draws from a variety of location technologies like trilateration, calibration, proximity, and angle of arrival to ensure the best solution for each customer's environment.

Two-way communication with personnel tags allows staff and security to receive text messages and acknowledge or escalate with programmable buttons.

Maps of the facility are easy to maintain. Zones are defined with a simple point and click. Rules are created with user friendly menus. A low-code design studio is available for custom integration.

How to get started?

- Load floor plans onto the AiRISTA software platform (cloud or premises).
- Configure and distribute tags among patients and responders.
- Install and complementary AiRISTA infrastructure and provide access to Wi-Fi network.
- Log into the server and setup users and response rules. You are now ready for your first system test!



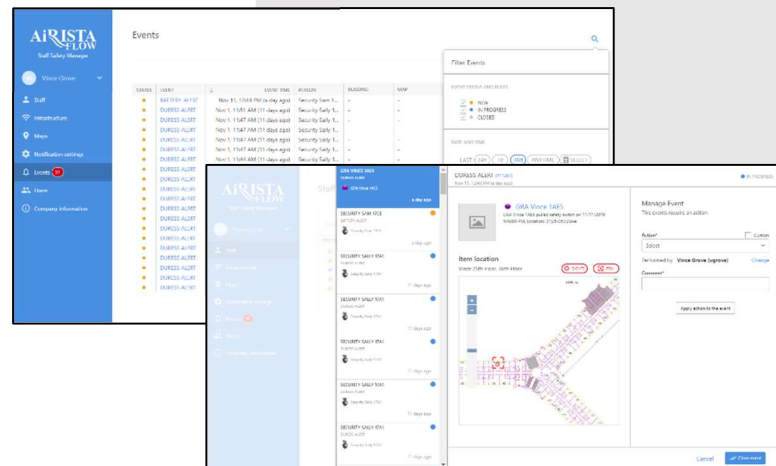
SOLUTION BENEFITS

- Ensure a coordinated real time response to elopement events
- Low monthly subscription price for complete package
- Intuitive user interface for management & reporting
- Deploys in days, not months
- Leverage the investment in your Wi-Fi infrastructure
- Integrates with building systems like door locks, lights, flat panel displays
- Part of a complete RTLS system including asset tracking, contact tracing, and temperature monitoring

WHY AiRISTA FLOW

Experts in wireless RTLS for over 10 years, AiRISTA Flow consolidates real time insights across the enterprise.

The world's #1 two-way communicating staff safety tag used in the most challenging workplace environments.



AiRISTA Flow, Americas
1966 Greenspring Dr. | Suite 125
Timonium, MD | 21093 | USA
Tel: 1-844-816-7127
salesinfo@airista.com

AiRISTA Flow, APAC
Level 9 Wyndham Building
1 Corporate Court
Gold Coast | QLD | Australia
Tel: +61- 07- 2104- 1852
salesinfo@airista.com

AiRISTA Flow, EMEA
Espoo | Finland | 02130
salesinfo@airista.com

airista.com