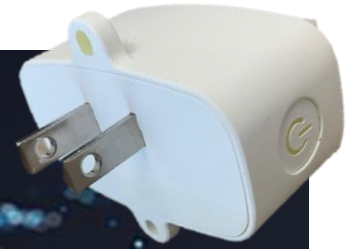


Wi-Fi / BLE Gateway Provides Wi-Fi Network Access for BLE Tags



The AiRISTA Flow G3 gateway provides Wi-Fi network access for BLE tags. The low cost and long battery life of BLE tags make them desirable, but to exchange data over Wi-Fi networks they need a gateway device between BLE networks and Wi-Fi networks. This facilitates use cases like choke point detection, telemetry exchange and proximity detection for social distancing. G3 has a built in temperature and humidity sensor.

The G3 gateway is a small AC powered device suitable for North American power outlets and many electrical outlet types for other countries using a plug adapter. It provides a low-cost method to communicate BLE information over Wi-Fi networks. BLE tags are convenient for their long battery life and low cost. But when a Wi-Fi network is used to exchange tag information, BLE-only tags require a dual BLE / Wi-Fi gateway to facilitate the communication.

Small, cost effective device allows BLE tags to communicate over Wi-Fi networks

The AiRISTA Flow G3 gateway uses an integrated eyelet to screw to the wall plate to deter theft. And the tactile button allows for user defined actions when necessary.

The G3 gateway is small and deploys quickly. It can be used at choke points like doorways as BLE tags move past. And they can be used in hotel rooms or along production lines to create an umbrella of communication coverage.

Companies want to maximize the investment in their Wi-Fi deployments. But until the access points support an integral BLE radio, the G3 will be the gateway between BLE networks and Wi-Fi networks.

Benefits

- Leverage the investment in Wi-Fi networks when deploying BLE tags
- Low cost
- Fast to deploy
- Support for popular BLE protocols
- Ideal for conference rooms, break areas, choke points, etc.
- Can be configured and monitored remotely
- Provides two-way communication with Airista Flow BLE Tags

Features

- BLE 4.2 & 5.0 compliant
- Over the Air programmability
- Omni-directional antenna
- On/Off switch
- Theft deterrent eyelet securely attaches to electrical face plate
- Temperature and Humidity Sensor

Wi-Fi Radio

Supported Wi-Fi Networks: 802.11 b/g/n
TX 802.11b, CCK 11 Mbps, Pout = +19 dBm
TX 802.11g, OFDM 54 Mbps, Pout = +17 dBm
TX 802.11n, MCS7, Pout = +17 dBm
Rx 802.11b, 1024 bytes packet length, -80 dBm
Rx 802.11g, 1024 bytes packet length, -70 dBm
Rx 802.11n, 1024 bytes packet length, -65 dBm
FCC, Canada, ETSI 2.4 - 2.4835 GHz
Japan 2.471 -2.497 GHz
Security: WEP, WPA2-PSK
Supported Data Rates, 1, 6,11,54,72 Mbps
Antenna: Omni-directional antenna

BLE Radio

Blue-tooth Low Energy (BLE) Radio
BLE 4.2 and 5.0 Compliant
RX BLE: 6mA
TX BLE: 6mA
TX BLE max Out Put Power: 5dBm
Antenna: Omni-directional antenna

Electrical Interface

AC Power: 100V to 264 VAC

User Interface

Tactile Button

Warranty

One Year Warranty

Frequency band

Channels 1-11: North America
Channels 1-13: Global
Channels 1-14: Japan

Environment

Operating Temperature: 32 to 122 °F / 0 to 50 °C
Storage Temperature: -40 to 140 °F / -40 to 60 °C
Humidity: 95 % non-condensing, relative humidity

Typical Operating Range

Line of Sight:

180 ft/54 m @11Mbit/s

Obstructions:

100 ft/30 m @11Mbit/s

Physical

Dimensions: 60mm x 35mm x 30mm

Certifications

FCC: Part 15 (US and Canada)
CE Mark (European Union)

Part Number

BLE to WiFi Gateway: G3

Accessories

Plug Converter Kit: G3-INTL-ADAPT

*Specifications subject to change without prior notice.

AiRISTA Flow, Americas
913 Ridgebrook Rd. | Suite 110
Sparks, MD | 21152 | USA
Tel: 1-844-816-7127
salesinfo@airistaflow.com

AiRISTA Flow, APAC
Level 9 Wyndham Building
1 Corporate Court
Gold Coast | QLD | Australia
Tel:+61- 07 3053 8375

AiRISTA Flow, EMEA
Vaisialantie 4 | B-rakennus | 02130
Espoo | Finland
Tel: +358-10-326-7600
salesinfo@airistaflow.com