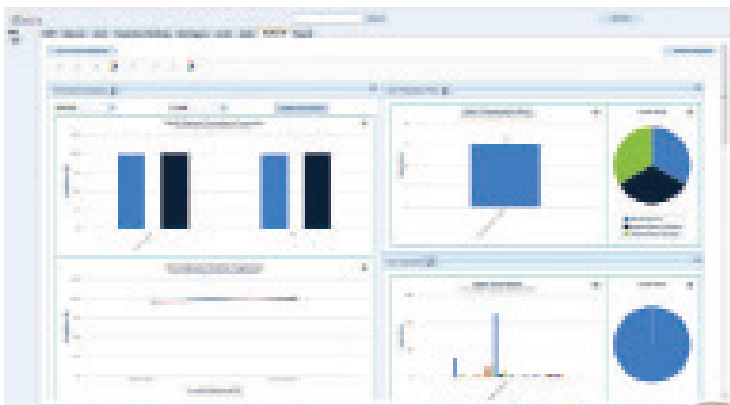


Wi-Fi tag for reference data

AiRISTA Flow's AiR Reference Beacon Units (RBU) and locators are designed to wirelessly, using 2.4 GHz Wi-Fi 802.11 standards; provide location reference data to AiRISTA Flow's family of active RFID and RTLS tags. The RBU and Locator, once activated, transmit Wi-Fi beacons including its own unique ID. Any AiRISTA Flow active tag equipped with the reference signal receiver in range of the wireless signal can detect and interpret the received data and transmit the information to AiRISTA Flow's Healthcare Visibility Solution software for location determination. AiRISTA Flow Reference Beacon Units and Locators are available in wall-plug (RBU.PLG & LOC.PLG) and ceiling mount (RBU.WM) form factors.



Features

- Wi-Fi 802.11 compliant
- Full transmit and receive functions
- Configurable transmit power: 0dBm to +12dBm
- BLE configurable transmit power: -6dBm to +4dBm
- Configurable beacon channel
- Tamper resistant installation attachment
- Optional tamper detection & sensor interface
- Optional PoE interface for wall/ceiling mount models
- External power interface, AC 110/240V with internal AC/DC adapter
- Rugged housing, concealed housing screws
- Built-in antenna
- Customizable features and firmware programmable by AiRISTA Flow
- Built-in reporting and infrastructure monitoring
- Over-the-air programming and configuration capabilities
- Over-the-air firmware upgrade capability

Technical Specifications

Radio

Wi-Fi Models:

Supported Wi-Fi Networks: 802.11 b/g
Sleep Mode Maximum Leakage Current: < 4 uA
RX Wi-Fi with CKK/DSSS (1, 2, 5, 11 Mbits/s): 59 mA
RX Wi-Fi with OFDM (6, 9...54 Mbits/s): 59 mA
Firmware configurable transmit power: 0dBm to +12dBm
Operating Current TX & RX Disable: 1mA RISC Cortex M4
Maximum Output Power: 18dBm in DSSS

BLE Models:

Sleep Mode Maximum Leakage Current: < 2 uA
RX BLE: 5 mA
TX BLE Beacons: 6 mA
Firmware configurable transmit power: -6dBm to +4dBm
Operating Current TX & RX Disable: 1mA Cortex M3
Maximum Output Power: +4dBm

Wi-Fi Models: 802.11 Compliant (2.4 GHz)
BLE Models: 2.4 GHz ISM Bluetooth Low Energy

Antenna Specifications

RBU Antenna: internal Omni-directional 802.11 Antenna
Locator Antenna: Internal Directional 802.11 Antenna

Environment

Operating temperature: -30°C to 85°C/
Storage temperature: -30°C to 85°C/

Typical Operating Range

Outdoor Range:

Wi-Fi Models: Up to 135m (~440 feet)
BLE Models: Up to 90m (~295 feet)

*outdoor installation requires NEMA 4X enclosures

Indoor Range:

Wifi Models: Up to 45m (~150 feet)
BLE Models: Up to 35m (~125 feet)

Physical

Dimensions ARTP-W: 78 x 52 x 38mm
Weight: < 560 grams
Form Factor: ABS plastic enclosure

Electrical

Wall pluggable model
Voltage: 110-240V AC
Certification: FCC and CE, UL approved internal power adapter
Current Consumption: 1A

Part Number

Wi-Fi Models:

Air.RBU.PLG.W
Air.RBU.WM.W
Air.LOC.PLG.W

Wi-Fi / BLE Models:

Air.RBU.PLG.WB
Air.RBU.WM.WB
Air.LOC.PLG.WB

Specifications subject to change without prior notice.

AiRISTA Flow, Americas
913 Ridgebrook Rd. | Suite 110 | Sparks, MD 21152
Tel: 1-844-RTLS-NOW
info@airistaflow.com

AiRISTA Flow, Finland
Vaisalan tie 6 | 02130 | Espoo
Tel: +358-10-326-7600
info@airistaflow.com

AiRISTA
FLOW